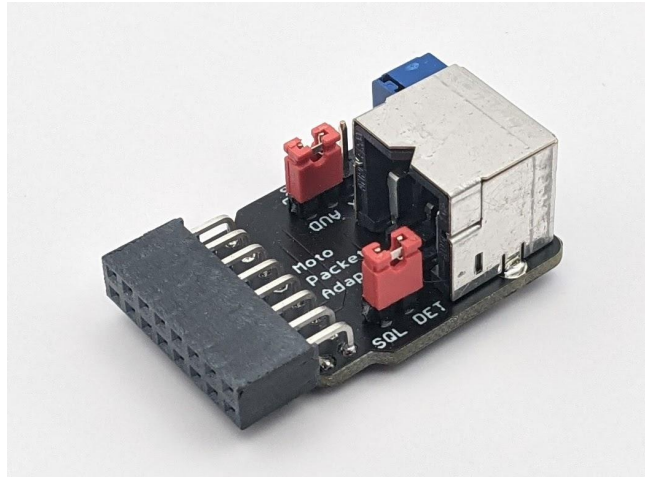
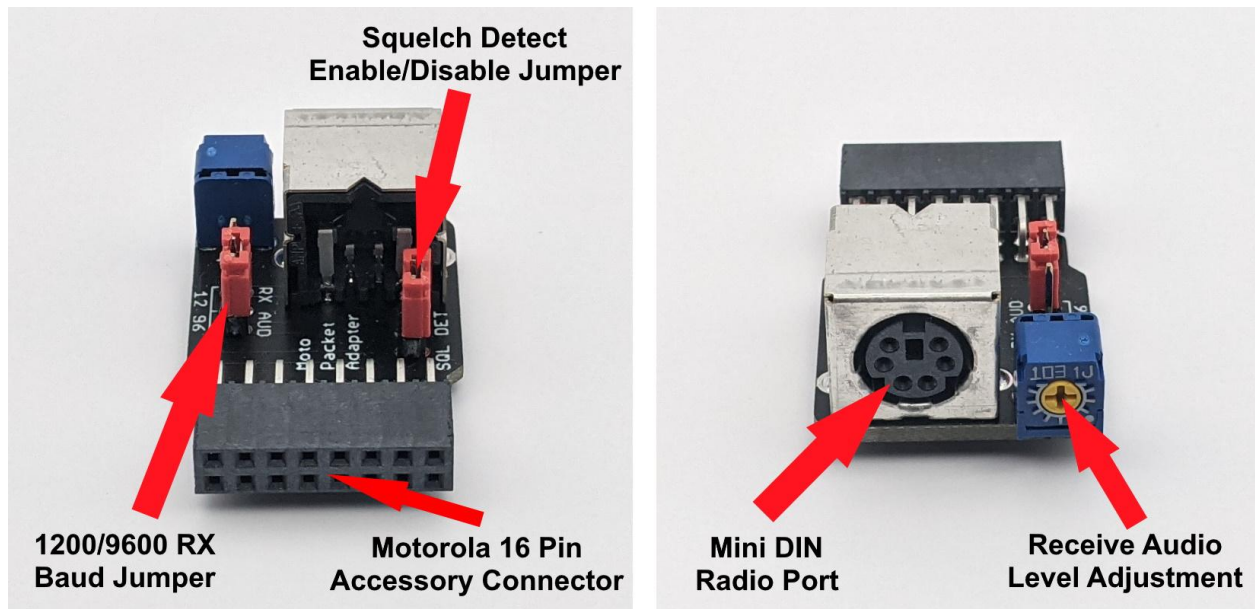




Motorola 16 Pin Packet/Data Adapter



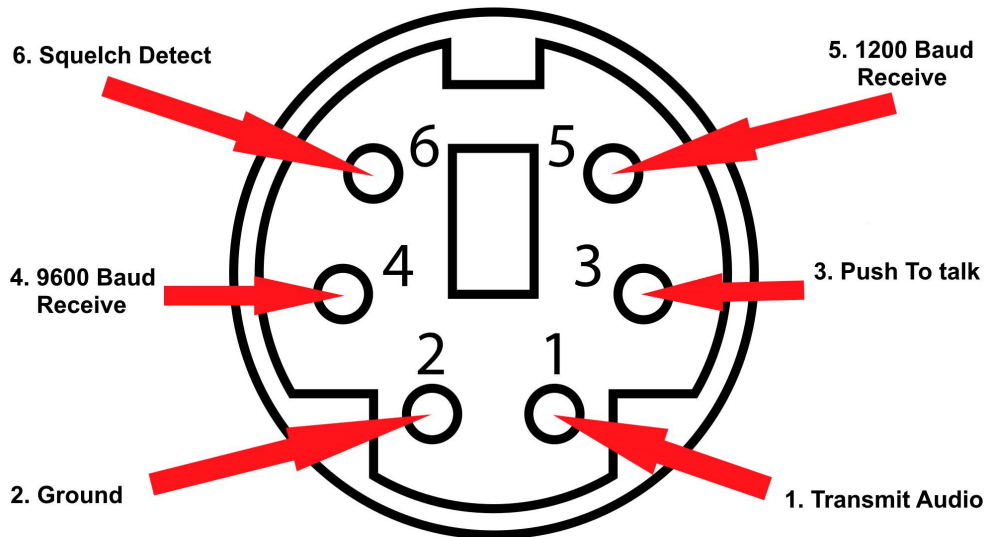
This adapter makes connecting a packet TNC, APRS Tracker or any other 1200/9600 baud data modem to a Motorola mobile radio with the standard rear panel 16 pin accessory port easy!



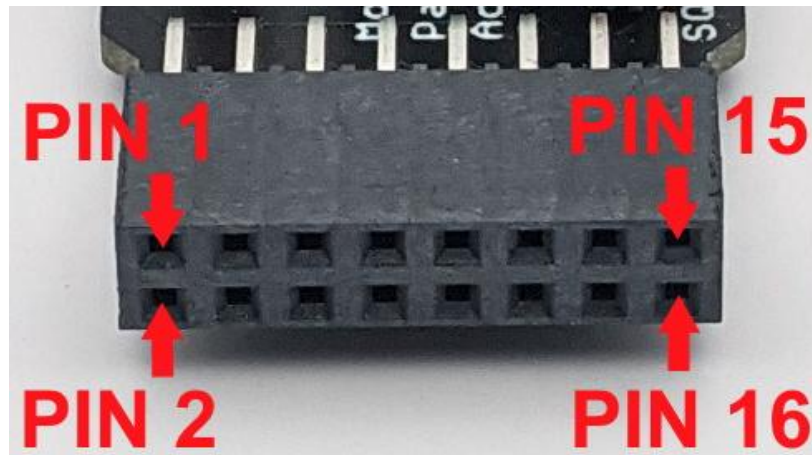
Notes: All jumpers and the receive level potentiometer are accessible even after plugged into the radio. Adapter should be **UPSIDE DOWN** when plugged in correctly.



Mini Din Radio Port Pinout



Motorola 16 Pin Pinout



Pin 2: Transmit Audio

Pin 3: Data Push to Talk Input

Pin 7: Ground

Pin 11: Flat or Filtered Receive Audio (audio routed based on jumper position)

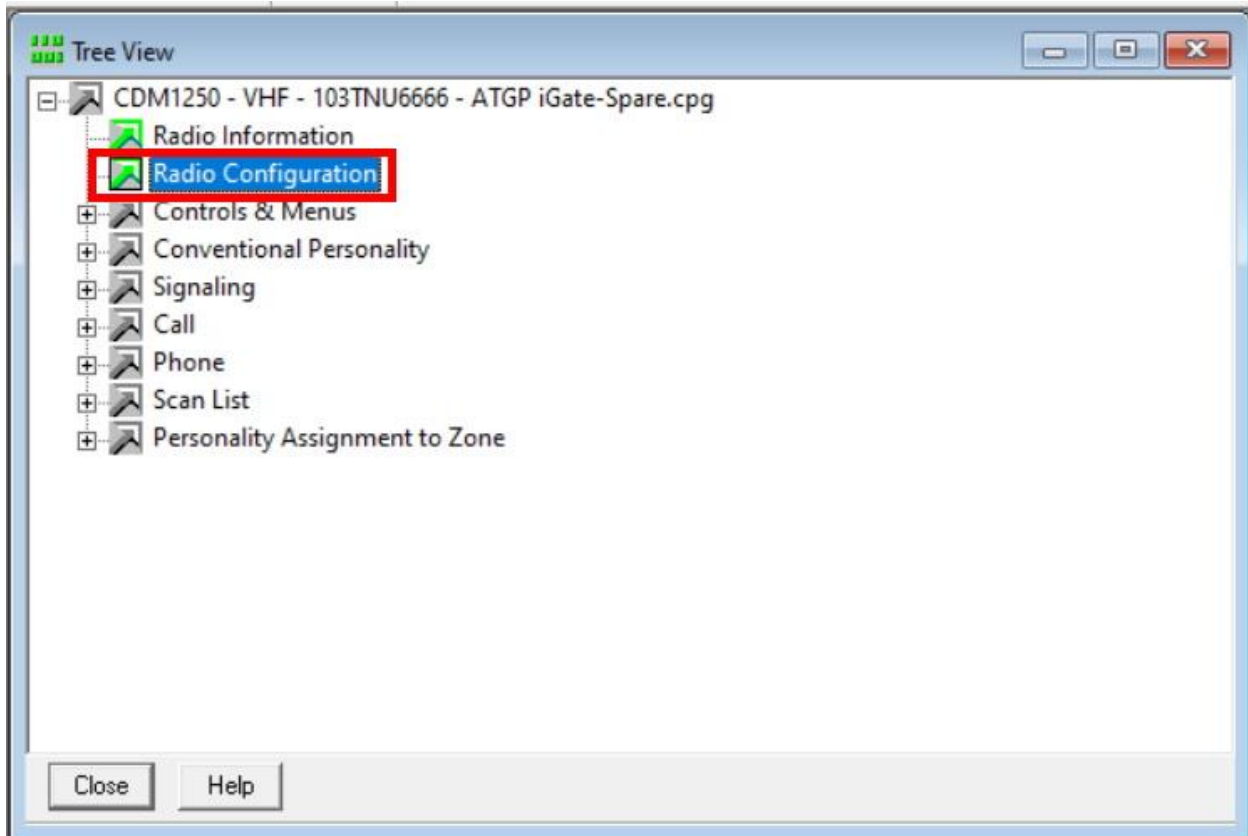
Pin 12: Squelch Detect (jumper determines if enabled/disabled)



Motorola Professional CPS Setting

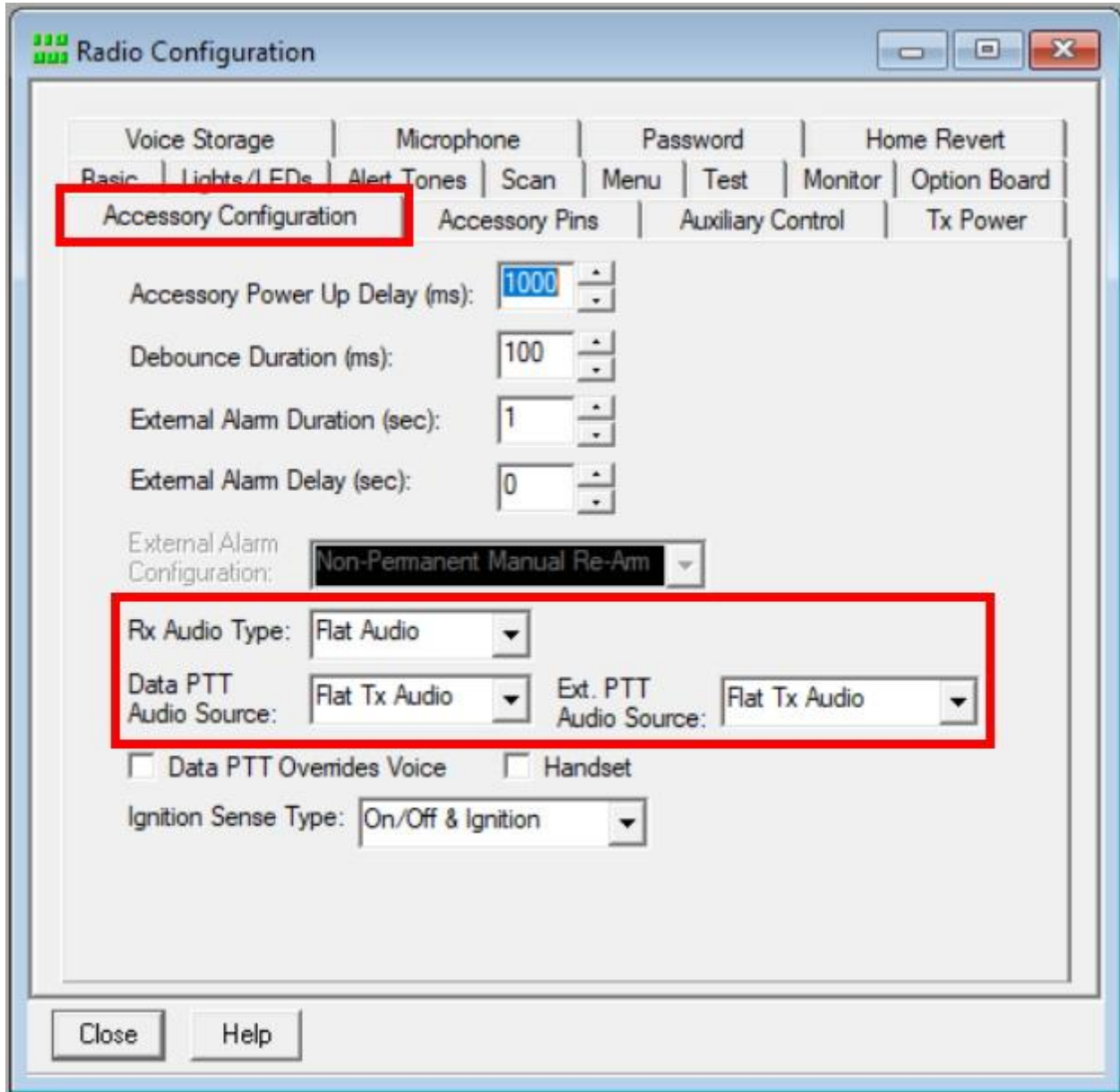
Step 1: Read radio codeplug

Step 2: Open “Radio Configuration” in the codeplug tree.





Step 3: Select “Accessory Configuration” tab and configure the highlighted settings





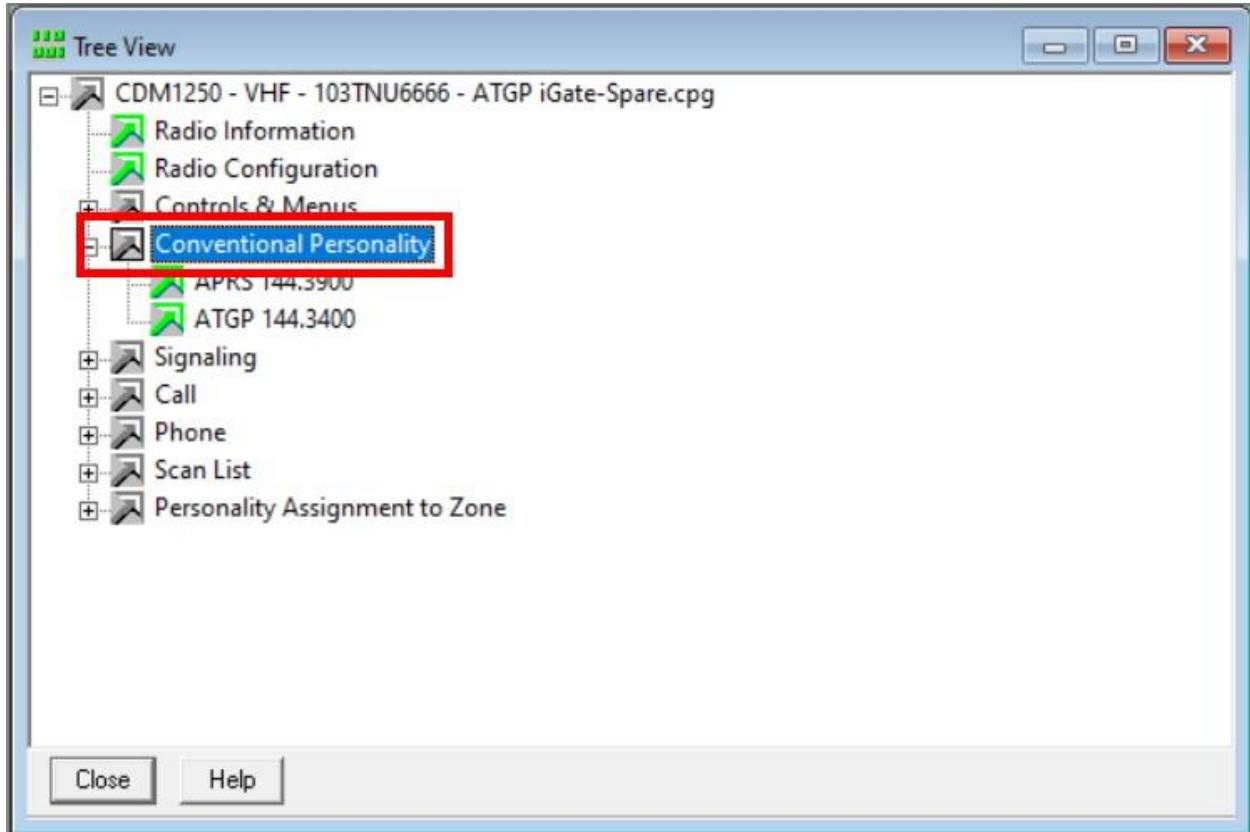
Step 4: Select "Accessory Pins" tab and configure the highlighted settings

The image shows a software window titled "Radio Configuration" with a menu bar and a main configuration area. The "Accessory Pins" tab is selected and highlighted with a red box. Below the menu bar, there is a dropdown for "Accessory Package" set to "Default". A table lists pin configurations with columns for Pin #, Function Selection (Direction), Active Level, and Debounce Enable. Two rows are highlighted with red boxes: Pin 3 (Data PTT (Input), Low, checked) and Pin 12 (CSQ Detect (Output), Low, unchecked). Buttons for "Close" and "Help" are at the bottom.

Pin #	Function Selection (Direction)	Active Level	Debounce Enable
3	Data PTT (Input)	Low	<input checked="" type="checkbox"/>
4	Null	Low	<input type="checkbox"/>
6	Null	Low	<input type="checkbox"/>
8	Null	Low	<input type="checkbox"/>
9	Null	Low	<input type="checkbox"/>
12	CSQ Detect (Output)	Low	<input type="checkbox"/>
14	Null	Low	<input type="checkbox"/>

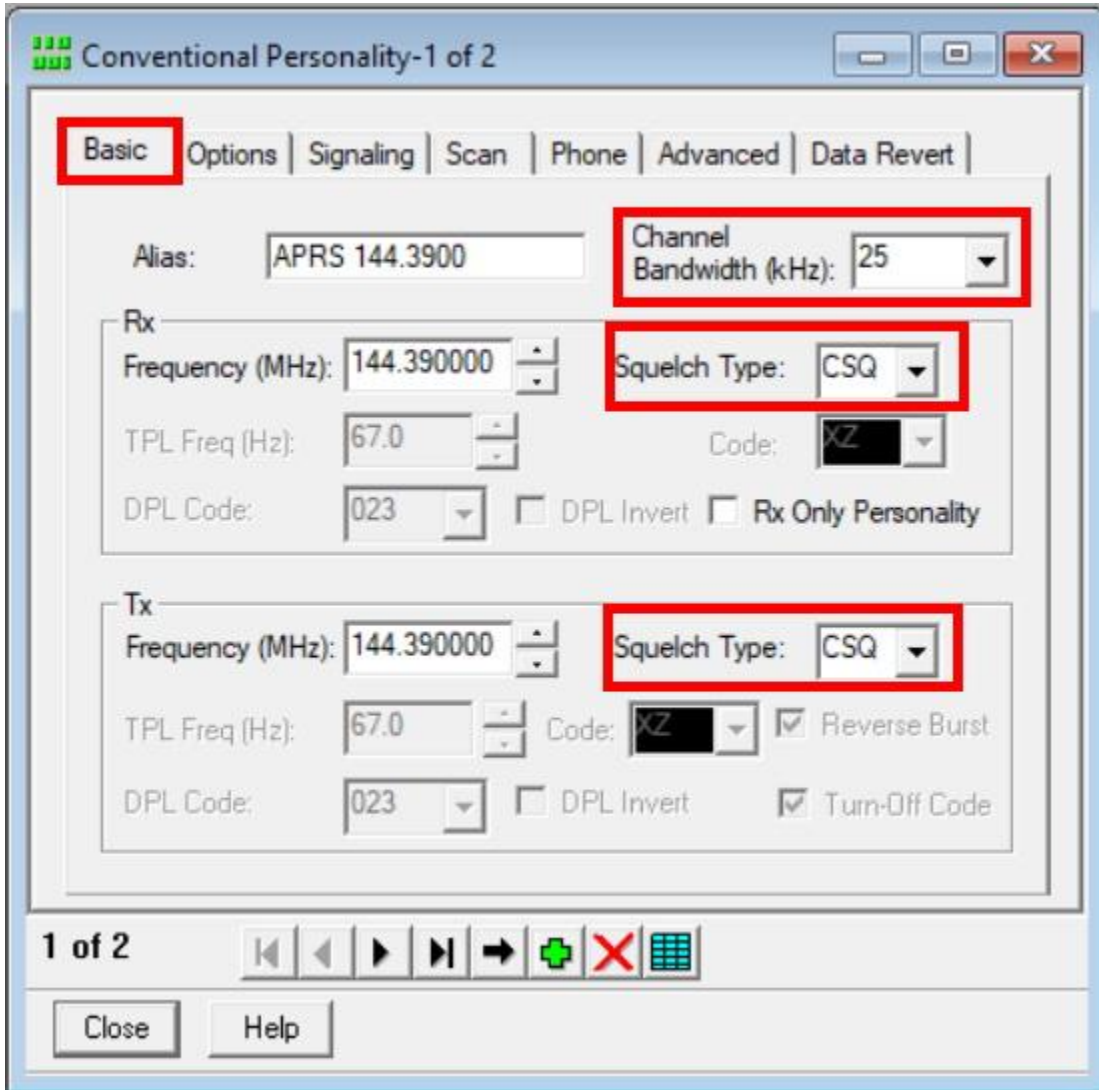


Step 5: Select “Conventional Personality” in the codeplug tree. Select a channel to edit.



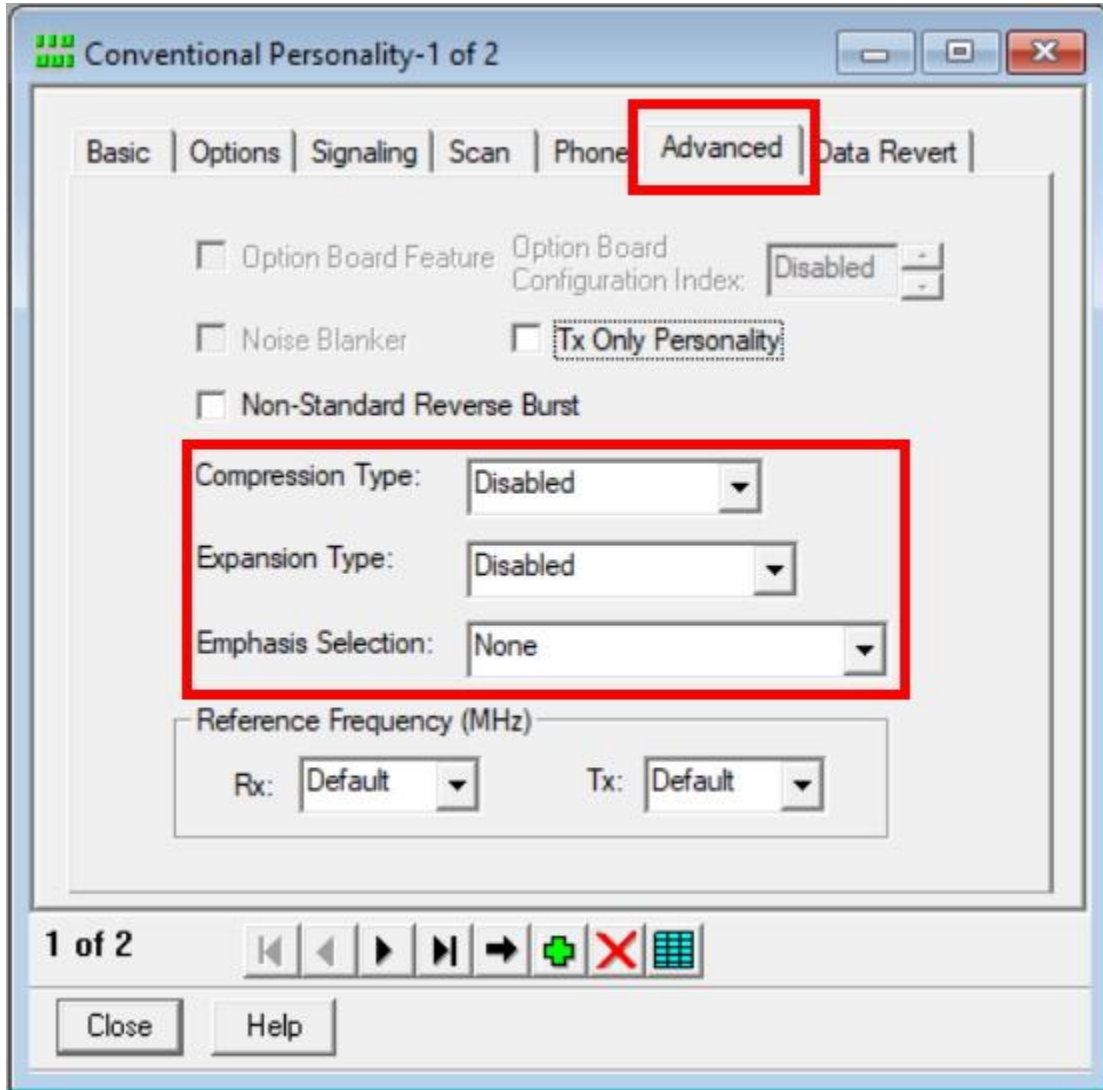


Step 6: Configure channel frequency, bandwidth and squelch type (CSQ for data)





Step 7: Under “Advanced” tab, configure the highlighted settings.



Step 8: Save codeplug and write it to the radio.